



PIN MAPPING

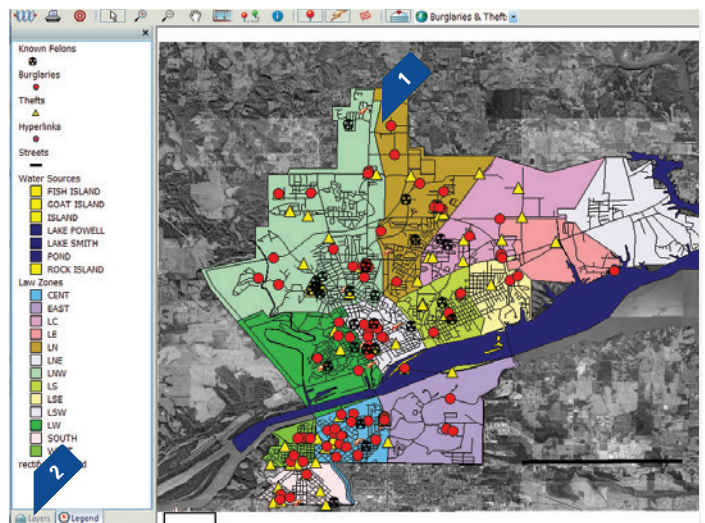
STUDY CRIME TRENDS AND MAP JURISDICTIONAL ACTIVITY

EFFICIENT ANALYSIS

Spillman Flex's Pin Mapping module allows users to plot any incident data with a confirmed address on a pin map. Using an interactive map, users can right-click on an item to view information regarding that incident. Once mapped, users can access any piece of data, record, or a combination of fields from any point on the map to meet the investigative needs of personnel and enhance crime analysis.

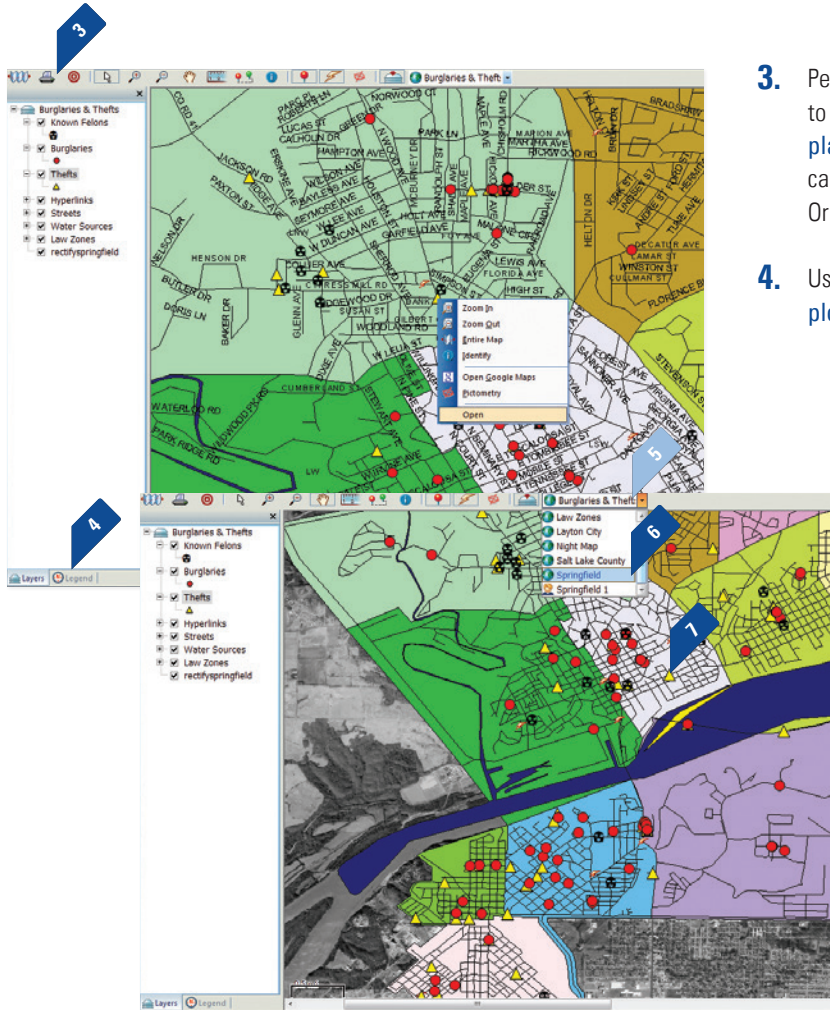
POWERFUL MAPPING TOOLS

Users can view different map layers using the Pin Mapping module's comprehensive toolbar. Mapping options also give personnel the option to change the color, size, and type of points, and even restrict or show all incidents on the map to identify trends. Additionally, Flex's Geographic Information System (GIS) helps to ensure address consistency by allowing users to build a comprehensive database of street and address information with each data entry.

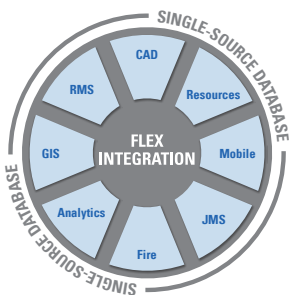


1. By left-clicking on a pin symbol in the "Layers" tree view, users can **customize pin color, size, and symbol name**. In addition, personnel can change the color of map elements, such as street lines, map zones, and city boundaries.
2. Users can **view all map layers** containing latitude and longitude coordinates for each data set plotted.

FLEX



3. Personnel can use the pin mapping toolbar menu to **print, zoom in and out, designate pin placement, and measure distance**. Users can also select the type of layer to view, such as Ortho, street, water, and fire.
4. Users can reference the map's legend to **view plotted data sets** added to the pin map.
5. Personnel can **customize and save various map configurations** in a menu for later access or use in planning meetings and reports. "Person" icons indicate personal map configurations, and "Globe" icons indicate public map configurations.
6. Personnel can **save pin maps** as separate images to use in reports or presentations. Each map's scale adds a reference point for this purpose.
7. Users can **open Flex records from the map** by right-clicking or double-clicking a pin icon.



TOTAL SOFTWARE INTEGRATION

Spillman Flex's Integrated Hub™ is an open, centralized database where all agency information is entered, stored, and extracted in real time, providing total software integration. This allows users to enter data once and have it automatically shared among related modules. Agencies using this module can optimize their system and enhance productivity through total integration with other Flex modules.

