



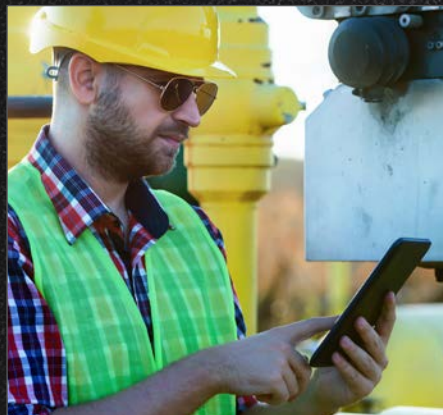
BRING TEAMS TOGETHER

Increase the safety and productivity of work teams by eliminating communication barriers and providing access to multimedia sharing and workflows on smart devices, regardless of network or location.

tait
communications

tait TEAMUP SMART DEVICE APP

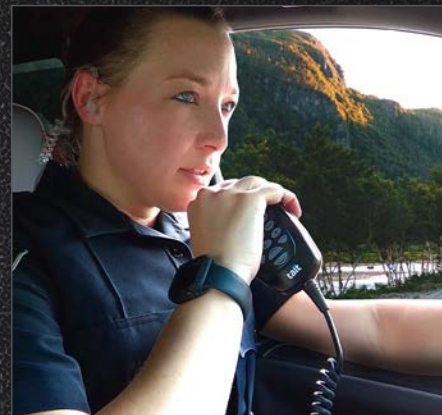
BENEFITS



Field technicians can provide local context to remote engineers using video streaming.



Fire crews can monitor firefighter safety and performance using location information.



First responders can communicate with support staff equipped with smartphones.

Connect Your Teams at the Push of a Button

Instantly enable Push-to-Talk communications between individuals and teams using smart devices and land mobile radios, regardless of network or location.

Boost Collaboration and Keep Everyone Informed

Share real-time information with a contact or group via text messages, location pins, attached photos, videos, files or contacts, and live streaming video.

Help Teams Work Faster and More Confidently

Turn recurring tasks into selectable templates that guide users through workflows and form submissions, speeding time to completion and reducing errors.

BRING YOUR TEAMS TOGETHER

Overcome the communication and collaboration challenges your teams encounter when kept apart by technology. Tait TeamUp is a subscription-based smart device application that brings teams together by bridging the communications gap between networks, devices and user locations. Workers using broadband devices can communicate with other workers or land mobile radios, anywhere in the world.

ALERT YOUR TEAM TO EMERGENCY SITUATIONS

Quickly signal dispatchers and team members when in distress. A one-button push sends an emergency call and message to identified contacts and groups, complete with caller and location information. Lone Worker routine check-ins, geographic boundary notifications, and Man Down capabilities automatically signal potential emergencies that may require a rapid response.

SEE AND CAPTURE EVENTS AS THEY HAPPEN

Provide on-scene situational context to remote teams using a smart device's integrated camera. Share live video with a dispatcher, another user or group of users in a talkgroup, while still making and receiving calls. Videos recorded and photos captured are easily and securely shared as attachments.

GET WORK FLOWING SMOOTHLY

Automate and digitize existing paper-based tasks, speed up approvals and reduce data errors by enabling your teams to access forms and manage processes using a broadband smart device. Set deadlines, assign priority status and automate approval requests, even within a workflow. Worker contact information, location, time and date can auto-populate form fields, reducing errors and creating an audit history of activity.

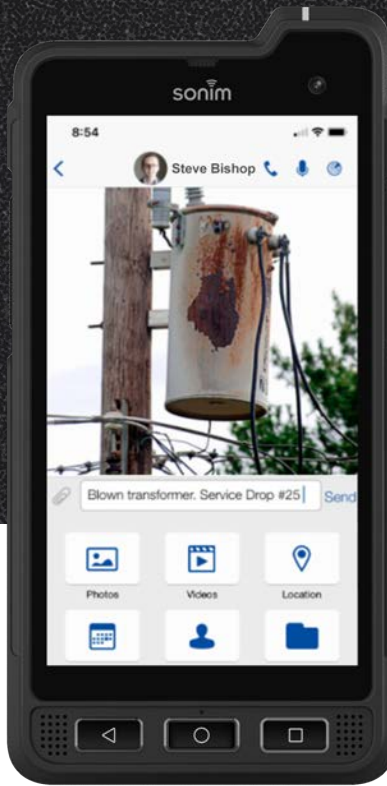
tait TEAMUP SMART DEVICE APP

FEATURES



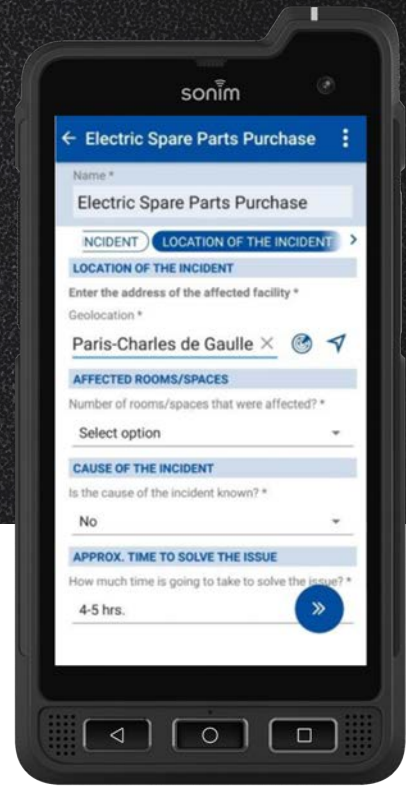
COMMUNICATE

Keep conversations flowing between individuals and teams anywhere in the world using Push-to-Talk, VoIP, cellular, and video.



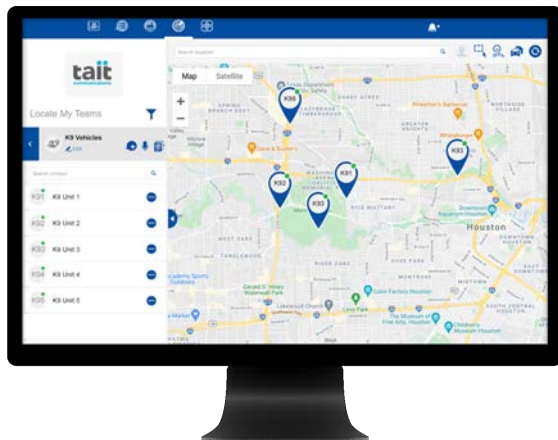
COLLABORATE

Exchange real-time information with another user or group of users by sharing photos, videos, locations, contacts, calendar events and documents.



CONDUCT BUSINESS

Provide teams access to forms or work instructions, like incident reports, from any smart device, and receive progress updates via real-time synchronization.



Bring teams together with an internet connection and Tait TeamUp running on desktop computers, ruggedized devices and consumer-grade smart devices.

tait TEAMUP SMART DEVICE APP

TECHNICAL SPECIFICATIONS

CAPABILITIES

Tait TeamUp is a cloud-based smart device application that provides system administrators the flexibility of enabling or disabling features.

Key Capabilities by Feature Group

Calling	Cellular	Locating	Location Sending	
	Channel		Location Sharing	
	Conference		Location Viewing	
	Push-to-Talk Over Broadband		Video	Broadcast Video Calling
	Video			Video Conferencing
	VoIP		Work Processing	Autofill Form
	Messaging			Email
Text		Process History Recording		
Voice		Process Scheduling		
Photos		Start-Stop Activity Timer		
Videos		Task Priority Assignment		
Files		Workflow Status		
Locations		Interoperating	Tait LMR Network Connectivity	
Contacts				
Calendar Events	COMPATIBILITIES			
User Screen	Rugged Devices from Tait			
Emergency Managing	Emergency Calling	Sonim XP800, Ruggear RG360, RG530, RG725 with optional hardware PTT and Emergency Key assignment.		
	Emergency Caller Locator	Smartphones		
	Emergency Messaging	Most Android and iOS phones		
	Fallback to Emergency Cell Call			
	Lone Worker Protection			
	Positive Security			
Remote User Check				

Tait has taken every care in compiling this brochure, but we're always innovating and therefore changes to our models, designs, technical specifications, visuals and other information included in this brochure could occur. For the most up-to-date information and for a copy of our terms and conditions please visit our website www.taitcommunications.com

The words "Tait", "TAIT AXIOM", and the "Tait" logo are trademarks of Tait International Limited.

Copyright © 2022 Tait International Limited Tait_TeamUp_Smart Device App_v1.1